
ANALYSED WILDLIFE MONITORING DATA SUMMARY
SCA SFM PROJECT
YEAR 2017



©SFD/TSFR Wildlife

Prepared by Wildlife Monitoring Team

March 2018

1.0 Analysed wildlife images data from all camera traps (RECONEXYX No. 1 & 2 and BUSHNELL) throughout the year 2017

No.	Common Name	Scientific Name	Conservation/Legal Status		RECONEXYX No.1 & 2 and BUSHNELL				
			IUCN	Sabah Wildlife Conservation Enactment 1997	Daytime	Night	Frequency	Total	%
1	Sambar deer	<i>Rusa unicolor</i>	Vulnerable	Schedule 3	120	100	173	220	69.8%
2	Bearded pig	<i>Sus barbatus</i>	Vulnerable	Schedule 3	79	8	60	87	27.6%
3	Orang Utan	<i>Pongo pygmaeus</i>	Critically Endangered	Schedule 1	4		4	4	1.3%
4	Pig-tailed macaque	<i>Macaca nemestrina</i>	Vulnerable	Schedule 2	2		1	2	0.6%
5	Pangolin	<i>Manis javanica</i>	Critically Endangered	Schedule 2	1		1	1	0.3%
6	Bornean Crested Fireback	<i>Lophura ignita</i>	Near Threatened	Schedule 2	1		1	1	0.3%
Grand Total					207	108	240	315	100%

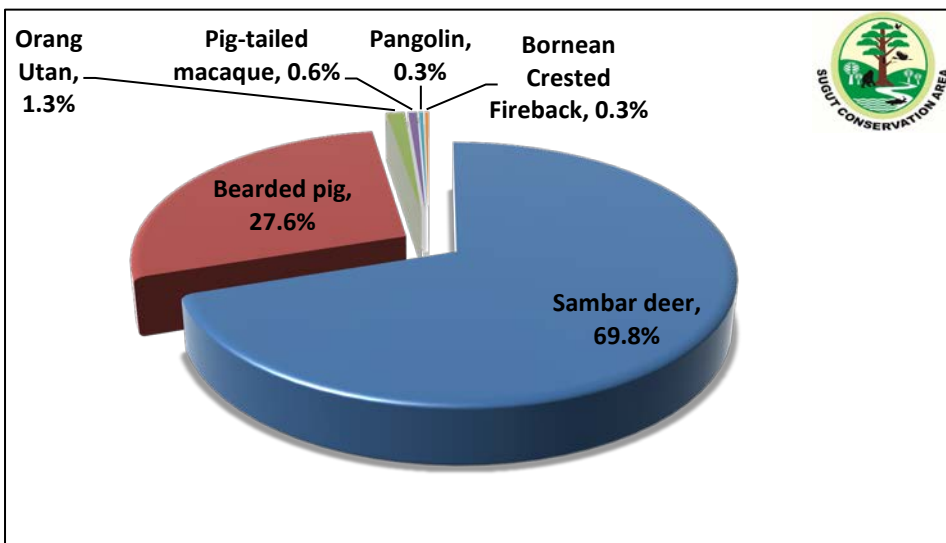
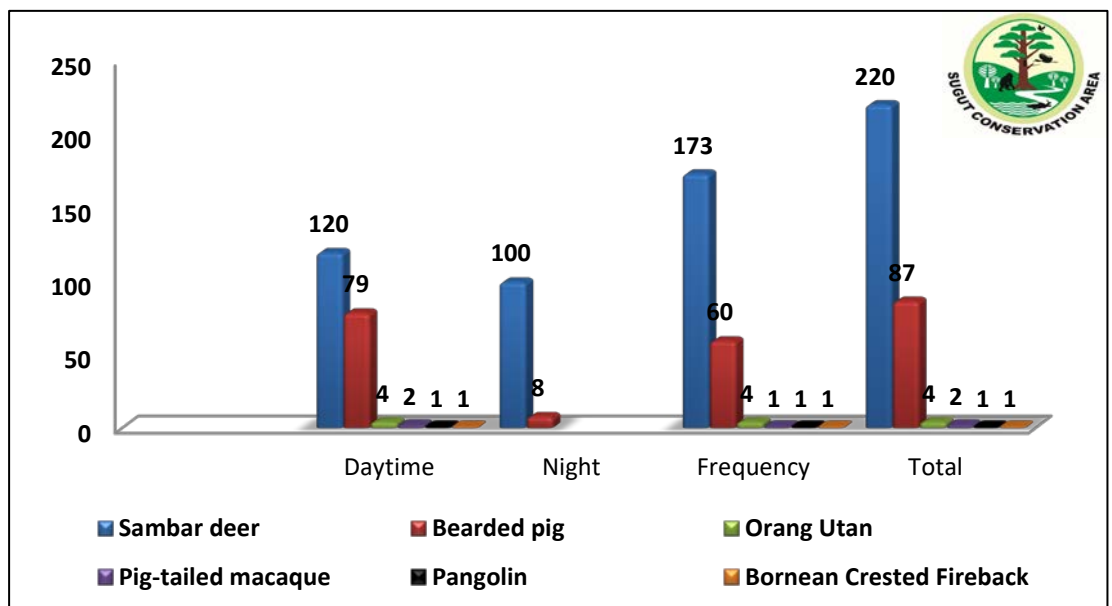


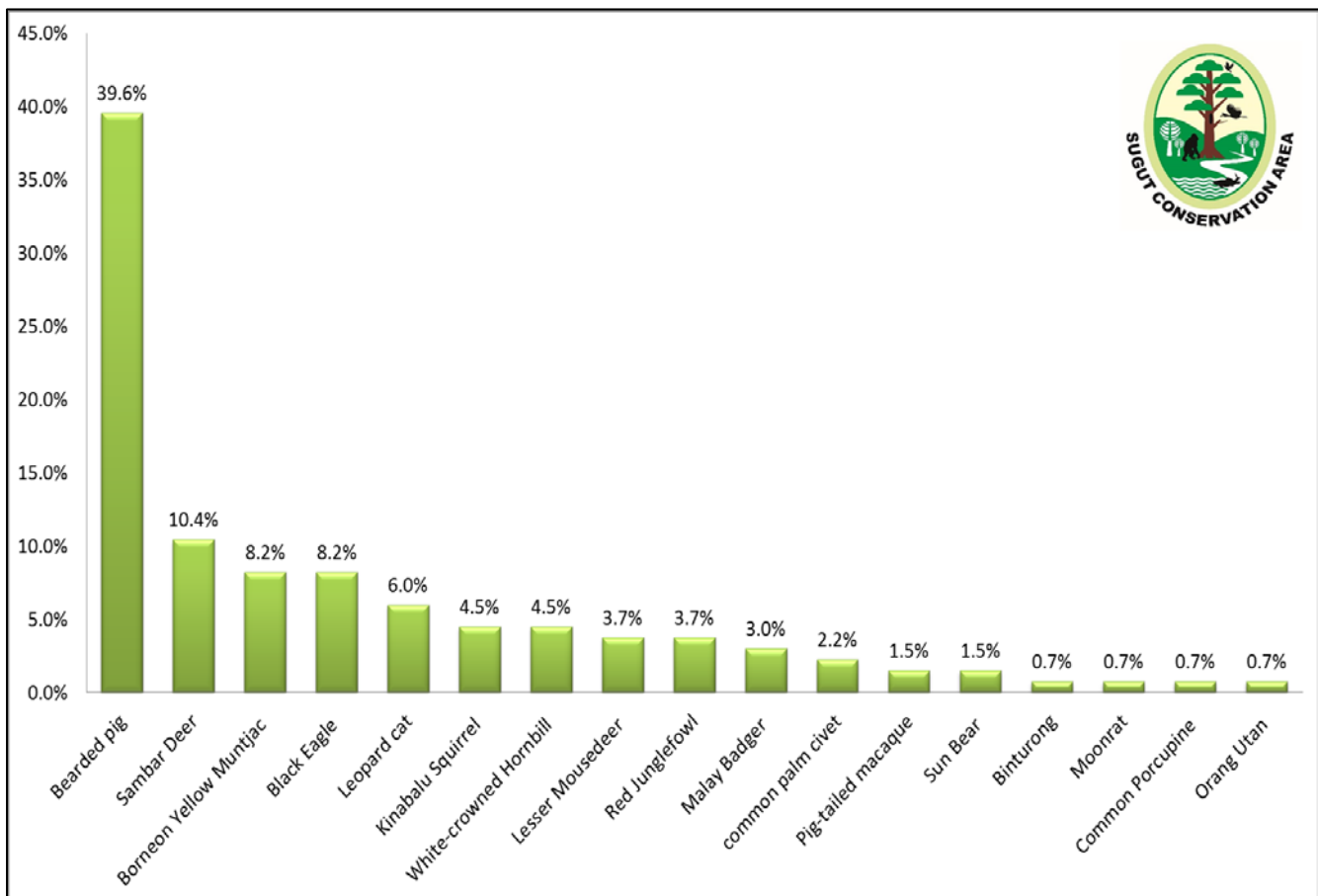
Chart 1.1: Wildlife species percentages from RECONEXYX No.1&2 and BUSHNELL

Chart 1.2 General information of wildlife species from RECONEXYX No.1&2 and BUSHNELL



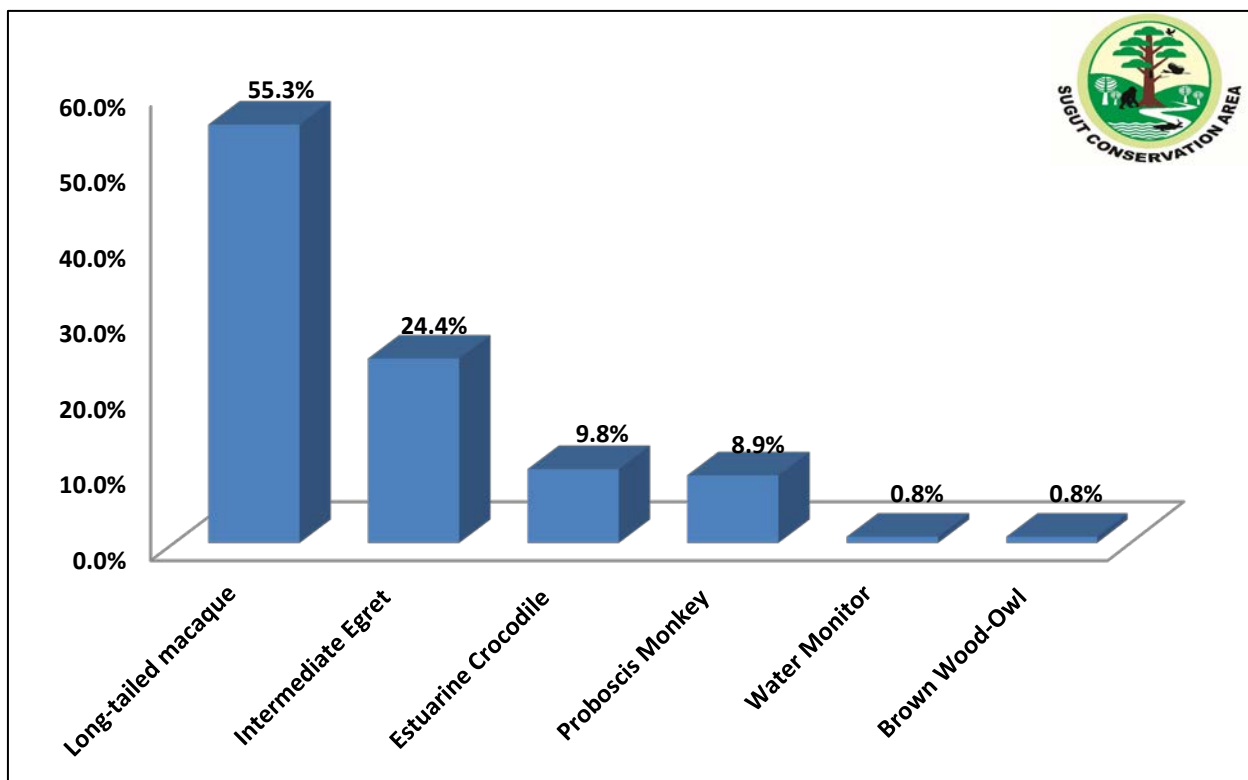
2.0 Analysed wildlife monitoring data (Survey by Car) throughout the year 2017

No.	Common Name	Scientific Name	Conservation/Legal Status		Survey by Car	
			IUCN	Sabah Wildlife Conservation Enactment 1997	Total	Percentage (%)
1	Bearded pig	<i>Sus barbatus</i>	Vulnerable	Schedule 3	53	39.6%
2	Sambar Deer	<i>Cervus unicolour</i>	Vulnerable	Schedule 3	14	10.4%
3	Borneon Yellow Muntjac	<i>Muntiacus atherodes</i>	Near Treated	Schedule 3	11	8.2%
4	Black Eagle	<i>Ictinaetus malayensis</i>	Least Concern	Schedule 2	11	8.2%
5	Leopard cat	<i>Felis bengalensis</i>	Least Concern	Schedule 2	8	6.0%
6	Kinabalu Squirrel	<i>Callosciurus baluensis</i>	Least Concern	Schedule 2	6	4.5%
7	White-crowned Hornbill	<i>Berenicornis comatus</i>	Near Treated	Schedule 2	6	4.5%
8	Lesser Mousedeer	<i>Tragulus javanicus</i>	Least Concern	Schedule 3	5	3.7%
9	Red Junglefowl	<i>Gallus gallus</i>	Least Concern	Not Evaluated	5	3.7%
10	Malay Badger	<i>Mydaus javanensis</i>	Least Concern	Schedule 2	4	3.0%
11	Common palm civet	<i>Paradoxurus hermaphroditus</i>	Least Concern	Schedule 2	3	2.2%
12	Pig-tailed macaque	<i>Macaca nemestrina</i>	Vulnerable	Schedule 2	2	1.5%
13	Sun Bear	<i>Helarctos malayanus</i>	Vulnerable	Schedule 1	2	1.5%
14	Binturong	<i>Arctictis binturong</i>	Vulnerable	Schedule 2	1	0.7%
15	Moonrat	<i>Echinosorex gymnura</i>	Least Concern	Not Evaluated	1	0.7%
16	Common Porcupine	<i>Hystrix brachyura</i>	Least Concern	Schedule 3	1	0.7%
17	Orang Utan	<i>Pongo pygmaeus</i>	Critically Endangered	Schedule 1	1	0.7%
Grand Total					134	100.0%



3.0 Analysed wildlife monitoring data (Survey by Boat) throughout the year 2017

No.	Common Name	Scientific Name	Conservation/Legal Status		Survey by Boat	
			IUCN	Sabah Wildlife Conservation Enactment 1997	Total	Percentage (%)
1	Long-tailed macaque	<i>Macaca fascicularis</i>	Least Concern	Schedule 2	68	55.3%
2	Intermediate Egret	<i>Egretta intermedia</i>	Least Concern	Schedule 2	30	24.4%
3	Estuarine Crocodile	<i>Crocodylus porosus</i>	Least Concern	Schedule 2	12	9.8%
4	Proboscis Monkey	<i>Nasalis larvatus</i>	Endangered	Schedule 1	11	8.9%
5	Water Monitor	<i>Varanus salvator</i>	Least Concern	Schedule 2	1	0.8%
6	Brown Wood-Owl	<i>Strix leptogrammica</i>	Least Concern	Schedule 2	1	0.8%
Grand Total					123	100.0%



4.0 Discussion

Based on the compiled data from all camera traps (RECONEX No.1&2 and BUSHNELL), there are six (6) wildlife species detected throughout the year 2017 namely, Sambar deer (*Rusa unicolor*), Bearded pig (*Sus barbatus*), Orang Utan (*Pongo pygmaeus*), Pig-tailed macaque (*Macaca nemestrina*), Pangolin (*Manis javanica*), and Bornean Crested Fireback (*Lophura ignite*).

One species which is listed in the **Schedule 1** of Wildlife Conservation Enactment 1997 and has been detected in Trusan Sugut Forest Reserves is the Orang utan. Three species namely, Pig-tailed macaque, Pangolin and Bornean Crested Fireback (*Lophura ignite*) which are listed in Schedule 2 were also detected. Both, Sambar deer and Bearded pig which are listed in Schedule 3 were also detected. While, based on the IUCN red list, two species namely Orang Utan and Pangolin are classified as **Critically Endangered**, one species (Bornean Crested Fireback) is classified as **Near Threatened** and the other three species are classified as **Vulnerable**.

The analysed data from all camera traps indicate that the Sambar Deer species is the highest recorded wildlife with 69.8% (approximately 220 individuals) detection. This species also has been noted as the highest amount of daytime and night time appearance at 120 and 100 respectively and frequencies of 173. While, the Bearded pig species is the second highest recorded wildlife at 27.6% on approximately 87 individuals were detected.

Based on the analysed survey data by car, the highest percentages of wildlife sighted is the Bearded Pig as much as 39.6% (approximately 53 individuals). Based on IUCN Red List, the **Near Threatened** species that have been detected are the Borneon Yellow Muntjac and the White-crowned Hornbill. Orang Utan and Sun Bear which are listed under **Schedule 1** of SWCE 1997 have been detected as much as 2 and 1 individuals respectively.

Section 3.0 shows the analysed wildlife monitoring data particularly along the river or sea area. The highest percentages of wildlife sighted are Long-tailed Macaque as much as 55.3% (68 individuals). Based on IUCN Red List, **Endangered** species that have been detected is Proboscis Monkey with a total at 11 individuals which are also listed under **Schedule 1** (Totally Protected) of SWCE 1997.

5.0 Wildlife Images



2017-06-17 2:48:57 PM M 1/3

90°F



Bearded Pig (*Sus barbatus*)

HC500 HYPERFIRE



2017-09-23 6:54:41 AM M 2/3

77°F



Pig-tailed macaque (*Macaca nemestrina*)

HC500 HYPERFIRE



