



SABAH FORESTRY DEPARTMENT
TRUSAN SUGUT FOREST RESERVE (TSFR)
SUSTAINABLE FOREST MANAGEMENT (SFM) PROJECT
Locked Bag No. 68, 90009 Sandakan

Tel : 089-242500, 242877
Fax : 089-671713

ANALYSED WILDLIFE MONITORING DATA SUMMARY TSFR – SCA SFM PROJECT YEAR 2016



©SFD/TSFR Wildlife

Prepared by Wildlife Monitoring Team-TSFR



1.0 Analysed wildlife images data from all camera traps (RECONEXYX No. 1-3)

No.	Common Name	Scientific Name	Conservation/Legal Status		RECONEXYX No.1-3				
			IUCN	Sabah Wildlife Conservation Enactment 1997	Daytime	Night	Frequency	Total	%
1	Sambar deer	<i>Rusa unicolor</i>	Vulnerable	Schedule 3	11	264	190	275	63.5%
2	Bearded pig	<i>Sus barbatus</i>	Vulnerable	Schedule 3	129	24	64	153	35.3%
3	Pig-tailed macaque	<i>Macaca nemestrina</i>	Vulnerable	Schedule 2	3		3	3	0.7%
4	Malayan sun bear	<i>Helarctos malayanus</i>	Vulnerable	Schedule 1	1		1	1	0.2%
5	Water monitor	<i>Varanus salvator</i>	Least Concern	Schedule 2	1		1	1	0.2%
Grand Total					145	288	259	433	100%

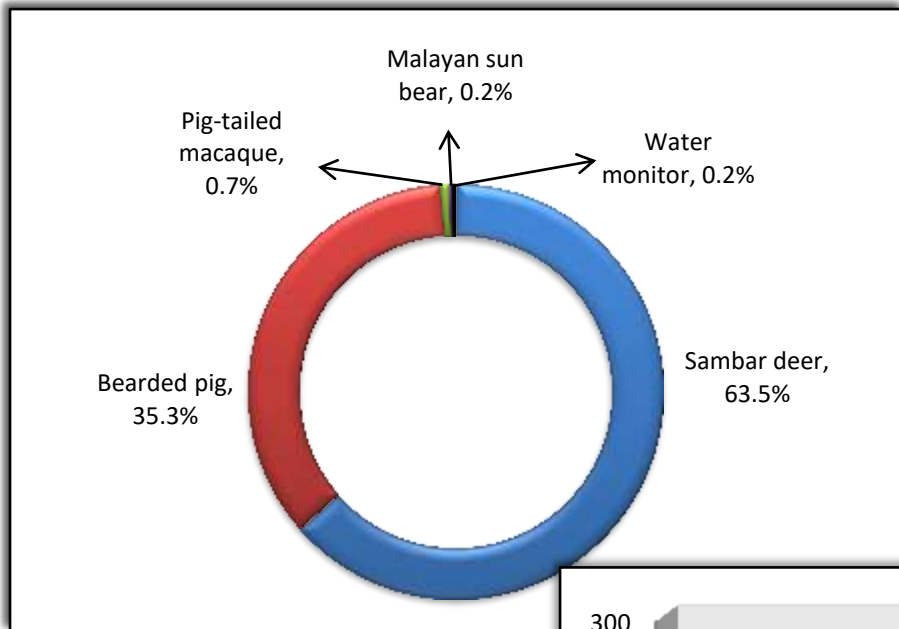


Chart 1 Wildlife species percentages from RECONEXYX No.1-3

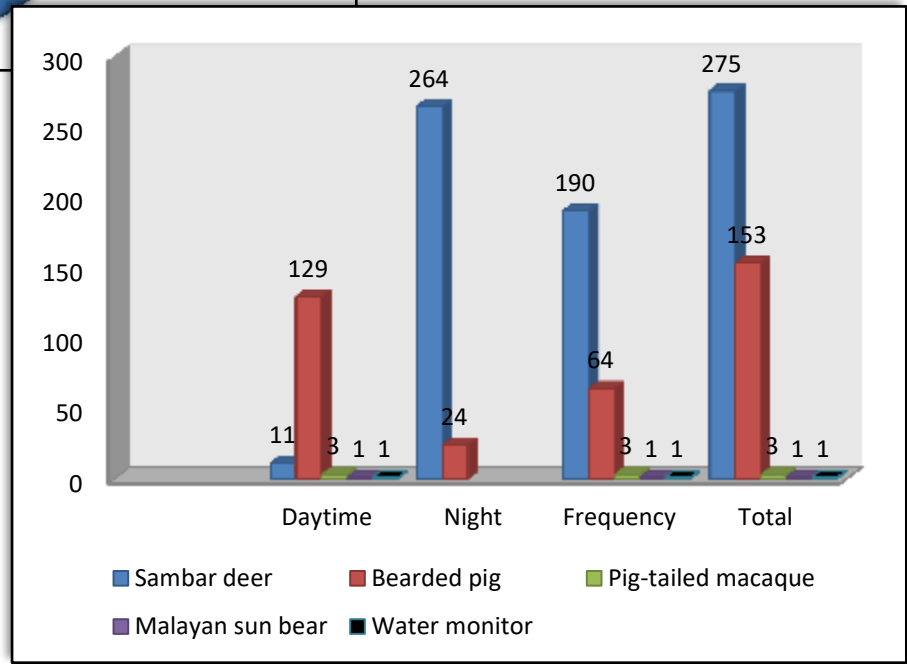


Chart 2 General information of wildlife species from RECONEXYX No.1-3



SABAH FORESTRY DEPARTMENT

TRUSAN SUGUT FOREST RESERVE (TSFR)

SUSTAINABLE FOREST MANAGEMENT (SFM) PROJECT

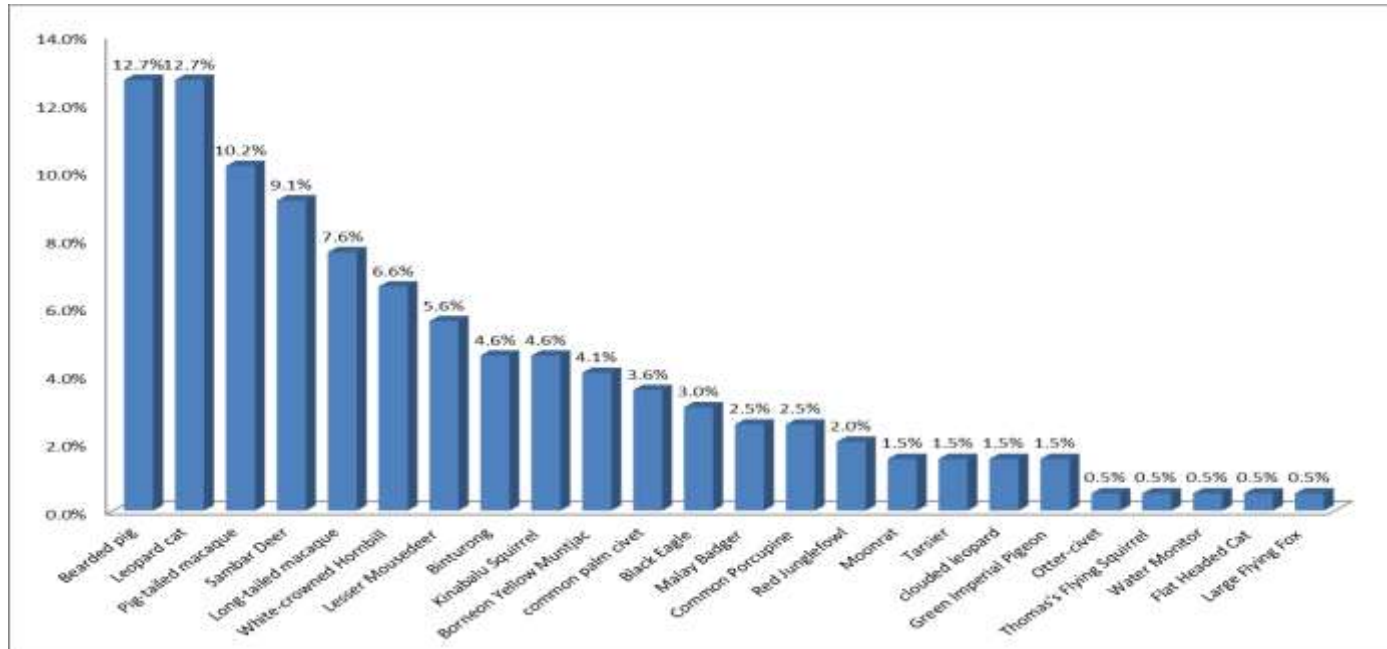
Locked Bag No. 68, 90009 Sandakan

Tel : 089-242500, 242877

Fax : 089-671713

2.0 Analysed wildlife monitoring data (Survey by Car)

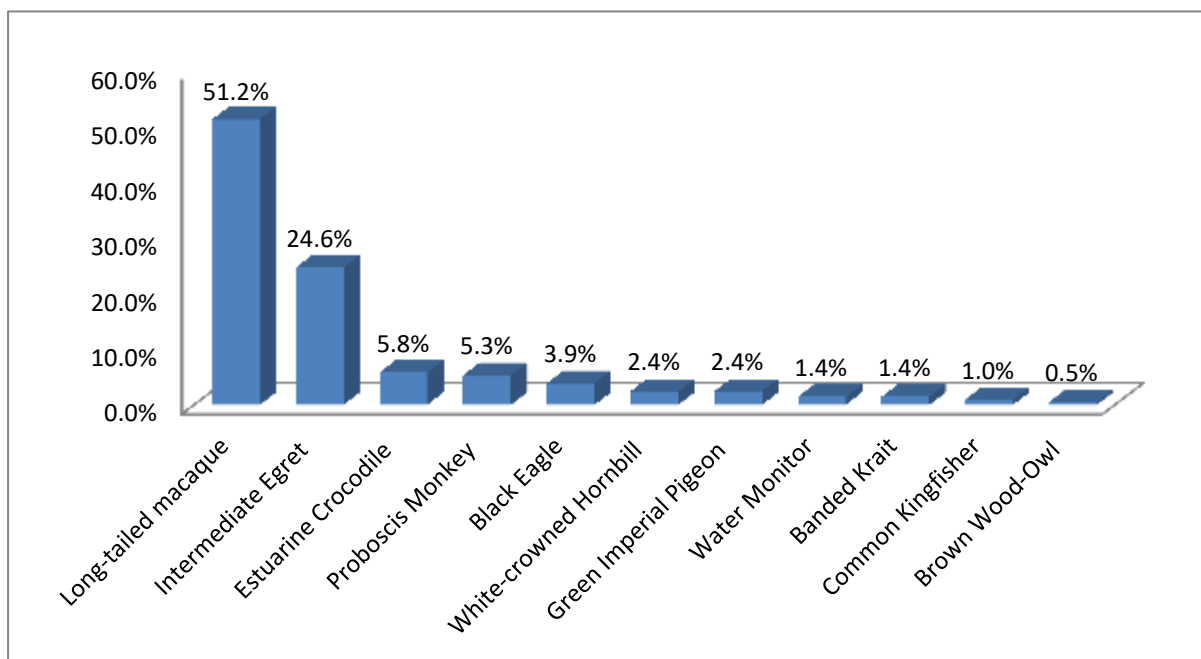
No.	Common Name	Scientific Name	Conservation/Legal Status		Survey by Car	
			IUCN	Sabah Wildlife Conservation Enactment 1997	Total	Percentage (%)
1	Bearded pig	<i>Sus barbatus</i>	Vulnerable	Schedule 3	25	12.7%
2	Leopard cat	<i>Felis bengalensis</i>	Least Concern	Schedule 2	25	12.7%
3	Pig-tailed macaque	<i>Macaca nemestrina</i>	Vulnerable	Schedule 2	20	10.2%
4	Sambar Deer	<i>Cervus unicolor</i>	Vulnerable	Schedule 3	18	9.1%
5	Long-tailed macaque	<i>Macaca fascicularis</i>	Least Concern	Schedule 2	15	7.6%
6	White-crowned Hornbill	<i>Berenicornis comatus</i>	Near Treated	Schedule 2	13	6.6%
7	Lesser Mousedeer	<i>Tragulus javanicus</i>	Least Concern	Schedule 3	11	5.6%
8	Binturong	<i>Arctictis binturong</i>	Vulnerable	Schedule 2	9	4.6%
9	Kinabalu Squirrel	<i>Callosciurus baluensis</i>	Least Concern	Schedule 2	9	4.6%
10	Borneon Yellow Muntjac	<i>Muntiacus atherodes</i>	Near Treated	Schedule 3	8	4.1%
11	common palm civet	<i>Paradoxurus hermaphroditus</i>	Least Concern	Schedule 2	7	3.6%
12	Black Eagle	<i>Ictinaetus malayensis</i>	Least Concern	Schedule 2	6	3.0%
13	Malay Badger	<i>Mydaus javanensis</i>	Least Concern	Schedule 2	5	2.5%
14	Common Porcupine	<i>Hystrix brachyura</i>	Least Concern	Schedule 3	5	2.5%
15	Red Junglefowl	<i>Gallus gallus</i>	Least Concern	Not Evaluated	4	2.0%
16	Moonrat	<i>Echinosorex gymnura</i>	Least Concern	Not Evaluated	3	1.5%
17	Tarsier	<i>Tarsius Bancanus</i>	Vulnerable	Schedule 2	3	1.5%
18	clouded leopard	<i>Neofelis nebulosa</i>	Vulnerable	Schedule 1	3	1.5%
19	Green Imperial Pigeon	<i>Ducula aenea</i>	Least Concern	Schedule 2	3	1.5%
20	Otter-civet	<i>Cynogale bennettii</i>	Endangered	Schedule 2	1	0.5%
21	Thomas's Flying Squirrel	<i>Aeromys thomasi</i>	Least Concern	Schedule 2	1	0.5%
22	Water Monitor	<i>Varanus salvator</i>	Least Concern	Schedule 2	1	0.5%
23	Flat-Headed Cat	<i>Felis planiceps</i>	Endangered	Schedule 2	1	0.5%
24	Large Flying Fox	<i>Pteropus vampyrus</i>	Near Treated	Schedule 3	1	0.5%
Grand Total					197	100.0%





3.0 Analysed wildlife monitoring data (Survey by Boat)

No.	Common Name	Scientific Name	Conservation/Legal Status		Survey by Boat	
			IUCN	Sabah Wildlife Conservation Enactment 1997	Total	Percentage (%)
1	Long-tailed macaque	<i>Macaca fascicularis</i>	Least Concern	Schedule 2	106	51.2%
2	Intermediate Egret	<i>Egretta intermedia</i>	Least Concern	Schedule 2	51	24.6%
3	Estuarine Crocodile	<i>Crocodylus porosus</i>	Low Risk/Least Concern	Schedule 2	12	5.8%
4	Proboscis Monkey	<i>Nasalis larvatus</i>	Endangered	Schedule 1	11	5.3%
5	Black Eagle	<i>Ictinaetus malayensis</i>	Least Concern	Schedule 2	8	3.9%
6	White-crowned Hornbill	<i>Berenicornis comatus</i>	Near Treated	Schedule 2	5	2.4%
7	Green Imperial Pigeon	<i>Ducula aenea</i>	Least Concern	Schedule 2	5	2.4%
8	Water Monitor	<i>Varanus salvator</i>	Least Concern	Schedule 2	3	1.4%
9	Banded Krait	<i>Bungarus fasciatus</i>	Least Concern	Not Evaluated	3	1.4%
10	Common Kingfisher	<i>Alcedo atthis</i>	Least Concern	Not Evaluated	2	1.0%
11	Brown Wood-Owl	<i>Strix leptogrammica</i>	Least Concern	Schedule 2	1	0.5%
Grand Total					207	100.0%





SABAH FORESTRY DEPARTMENT

TRUSAN SUGUT FOREST RESERVE (TSFR)

SUSTAINABLE FOREST MANAGEMENT (SFM) PROJECT

Locked Bag No. 68, 90009 Sandakan

Tel : 089-242500, 242877

Fax : 089-671713

Based on the compiled data from all camera traps (RECONEXYX No.1-3), there are five (5) wildlife species detected throughout the year 2016 namely, Sambar deer (*Rusa unicolor*), Bearded pig (*Sus barbatus*), Pig-tailed macaque (*Macaca nemestrina*), Malayan sun bear (*Helarctos malayanus*) and Water Monitor (*Varanus salvator*).

One species which is listed in the Schedule 1 of Wildlife Conservation Enactment 1997 and has been detected in Trusan Sugut Forest Reserves is the Malayan sun bear. Two species namely, Pig-tailed macaque and Water monitor which are listed in Schedule 2 were also detected. Both, Sambar deer and Bearded pig which are listed in Schedule 3 were also detected. While, based on the IUCN red list, one species namely Water monitor is classified as least concern and the other four species are classified as vulnerable.

The analysed data from all camera traps indicate that the Sambar deer species is the highest recorded wildlife with 63.5% (approximately 275 individuals) detection. This species also has been noted as the highest amount of night time appearance at 264 and frequencies of 190. While, the Bearded pig species is the second highest recorded wildlife at 35.3% on approximately 153 individuals were detected. This species has been recorded as the highest amount of daytime appearance of 129.

Based on the analysed survey data by car, the highest percentages of wildlife sighted are the Bearded Pig and Leopard Cat where both have recorded the same number of percentages and total individual sighted at 12.7% and 25 individuals. Based on IUCN Red List, the endangered species that has been detected is the Otter-Civet. Clouded Leopard which is listed under Schedule 1 of SWCE 1997 has been detected as much as three individuals.

Section 3.0 shows the analysed wildlife monitoring data particularly along the river or sea area. The highest percentages of wildlife sighted are Long-tailed Macaque as much as 51.2% (106 individuals). Based on IUCN Red List, endangered species that have been detected is Proboscis Monkey with a total at 11 individuals which are also listed under Schedule 1 (Totally Protected) of SWCE 1997.

The Orang-utan (*Pongo pygmaeus*) population density in TSFR SCA SFM Project area is estimated at 2.08 ind/km² (95% CI: 1.01-3.15). Based on the area of TSFR SCA SFM Project, the average Orang-utan population is estimated 79.94 individuals (95%CI: 38.82-121.09) (WWF-Malaysia, 2015).



SABAH FORESTRY DEPARTMENT
TRUSAN SUGUT FOREST RESERVE (TSFR)
SUSTAINABLE FOREST MANAGEMENT (SFM) PROJECT
Locked Bag No. 68, 90009 Sandakan

Tel : 089-242500, 242877
Fax : 089-671713

4.0 Wildlife Images





SABAH FORESTRY DEPARTMENT
TRUSAN SUGUT FOREST RESERVE (TSFR)
SUSTAINABLE FOREST MANAGEMENT (SFM) PROJECT
Locked Bag No. 68, 90009 Sandakan

Tel : 089-242500, 242877
Fax : 089-671713





SABAH FORESTRY DEPARTMENT
TRUSAN SUGUT FOREST RESERVE (TSFR)
SUSTAINABLE FOREST MANAGEMENT (SFM) PROJECT
Locked Bag No. 68, 90009 Sandakan

Tel : 089-242500, 242877
Fax : 089-671713

